

MAIN SPECIFICATIONS

- 1 Aluminium
- 2 Epoxy resin coating  
Black, RAL 9005, textured finish **SW**
- 3 Cylindrical-head screw DIN 912  
Stainless Steel AISI 304
- 4 Hexagon nut DIN 985  
Stainless Steel AISI 304  
Self-locking via polyamide ring

FEATURES AND APPLICATIONS

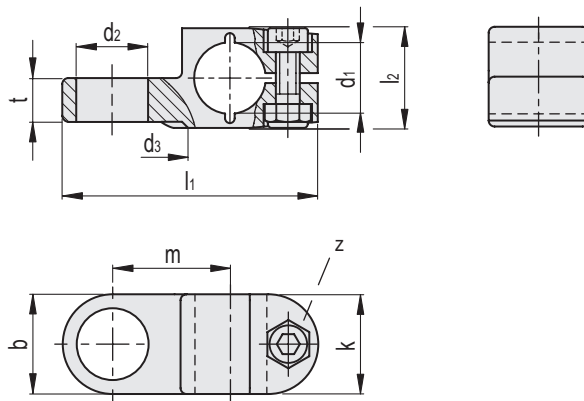
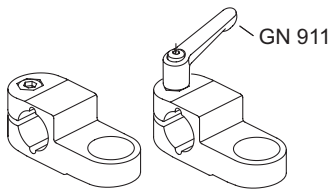
The clamping bore of sensor holders GN 277.4 is mechanically machined and designed for construction tubes GN 990 (see page -). At the screw location **z**, the socket cap screw reduces the bore cross-section for clamping.  
For clamping without tools, the socket cap screw can be replaced by an adjustable lever GN 911 (see page -) listed in the table as accessory.

ACCESSORY

Adjustable Hand Levers GN 911 (see page -).

ON REQUEST

Stainless steel version.



Conversion Table	
1 mm = 0.039 inch	
d1	
mm	inch
12	0.47
14	0.55
15	0.59
16	0.62
18	0.70

METRIC

Code	Description	d1	d2	d3	b	k	l1	l2	m	t	z	Clamping kit	△
GN.60101	GN 277.4-B12-B12-2-SW	B 12	B 12	27	25	25	64	25	29.5	11	M6-20	GN 911-45 / GN 911-63	59
GN.60102	GN 277.4-B12-B18-2-SW	B 12	B 18	27	25	25	64	25	29.5	11	M6-20	GN 911-45 / GN 911-63	57
GN.60106	GN 277.4-B14-B12-2-SW	B 14	B 12	27	25	25	64	25	29.5	11	M6-20	GN 911-45 / GN 911-63	57
GN.60107	GN 277.4-B14-B18-2-SW	B 14	B 18	27	25	25	64	25	29.5	11	M6-20	GN 911-45 / GN 911-63	55
GN.60111	GN 277.4-B15-B12-2-SW	B 15	B 12	27	25	25	64	25	29.5	11	M6-20	GN 911-45 / GN 911-63	56
GN.60112	GN 277.4-B15-B18-2-SW	B 15	B 18	27	25	25	64	25	29.5	11	M6-20	GN 911-45 / GN 911-63	54
GN.60116	GN 277.4-B16-B12-2-SW	B 16	B 12	27	25	25	64	25	29.5	11	M6-20	GN 911-45 / GN 911-63	55
GN.60117	GN 277.4-B16-B18-2-SW	B 16	B 18	27	25	25	64	25	29.5	11	M6-20	GN 911-45 / GN 911-63	53
GN.60121	GN 277.4-B18-B12-2-SW	B 18	B 12	27	25	25	64	25	29.5	11	M6-20	GN 911-45 / GN 911-63	54
GN.60122	GN 277.4-B18-B18-2-SW	B 18	B 18	27	25	25	64	25	29.5	11	M6-20	GN 911-45 / GN 911-63	52

Tube connectors